

# HomeLoco™ Concept Summary

Prepared by MLC September 2022

## Energy equity

Access to **affordable energy** enables communities to provide their own:

- Nutrition, sanitation & clean water
- Shelter
- Employment

Energy-equity is key to the development of healthy, self-sufficient & **resilient communities**...

## The “Energy Hardship Trap”...

**Fossil fuels** are imbedded in the global economy, yet their unsustainable use has lead to:

- The climate crisis
- Widespread pollution
- High & rising financial costs

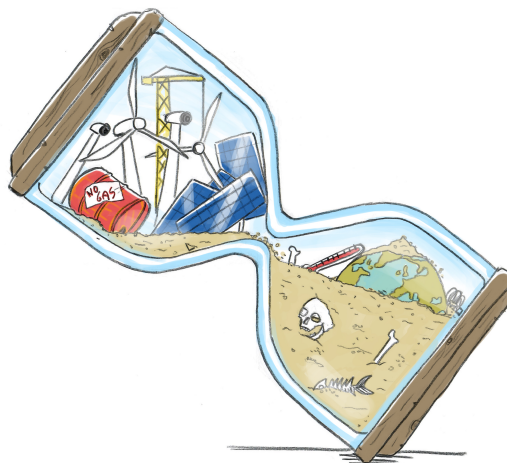
Consequently, small communities which rely on this energy source, suffer the most.

## Challenges of Renewable Energy

**Popular renewables** are challenged by their:

- **High Energy Investment**
  - Significant fossil inputs required
  - Scaling up is expensive & relies upon complex global supply chains.
- High-tech complexity
- Intermittent power generation

Renewable energy cannot provide communities with energy independence and self-sufficiency. As such, **disadvantaged communities** will continue to suffer from energy hardship & inequity...



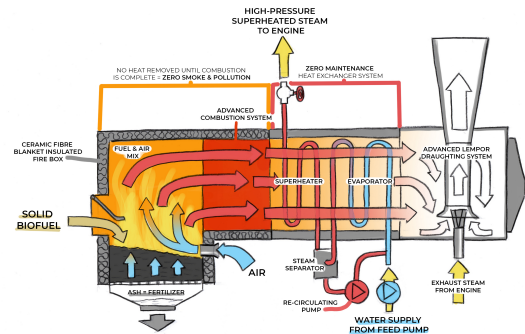
Scaling renewable energy requires fossil fuel investments which the world cannot afford

## HomeLoco™

- Zero reliance on fossil fuel infrastructure
- Combined heat, power & steam
  - Electricity, space heating, cooking
- A sustainable community housing solution

## Generator Facts

- 5 kW generator units - scaleable to 20kW
- Advanced-steam technology
  - Complete combustion; zero smoke, zero sparks & zero risk of explosion
  - Low tech & few fossil inputs required
- Powered by affordable, accessible & zero-carbon biomass energy



## Biomass Energy

Energy for Self-Sufficient Communities

- **Low Energy Investment**
  - Minor fossil inputs required
  - Low cost to plant at large scale
- Abundant in most rural communities
- Transportable, stable, safe